

futurehome

SMARTHUB II



startguide



Get started in three simple steps

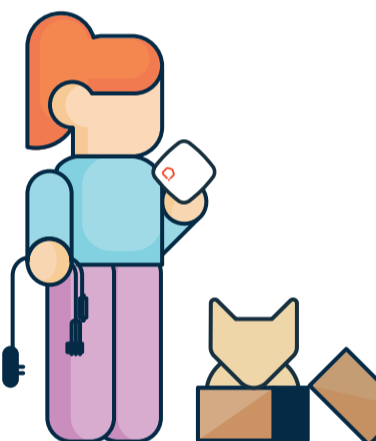
01

Connect the Smarthub II to power and network



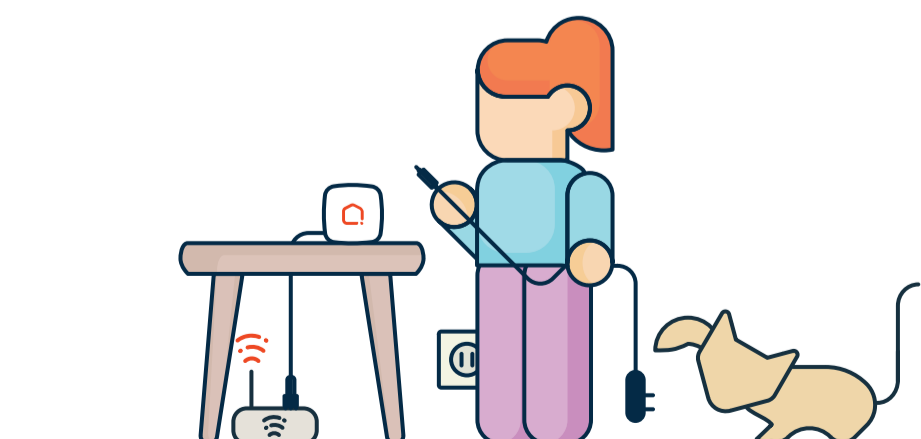
02

Download the app and allow a few minutes for the Smarthub II to fully start, then: 'add smarthub'

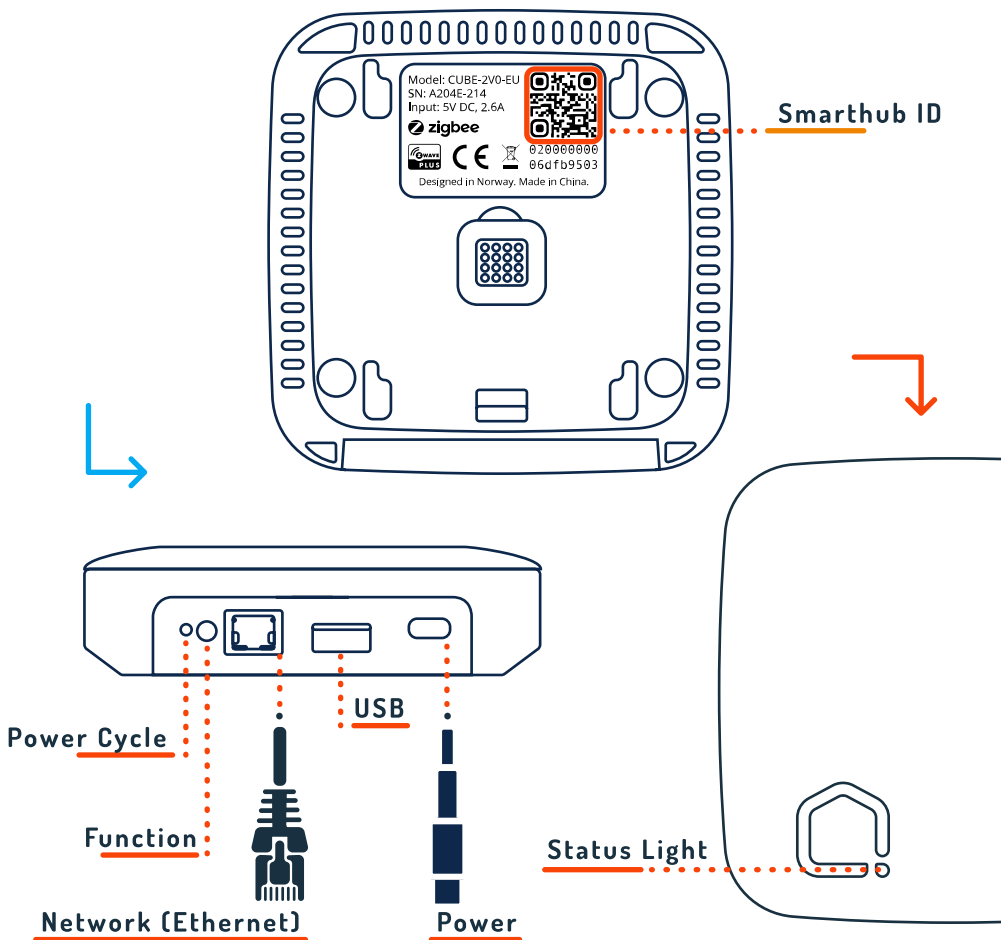


03

Start adding smart products. For guide and support, see support.futurehome.io



www.start.futurehome.io



futurehome



Important security instructions

- Do not install the Smarthub II close to or inside containers of metal or sources of electromagnetic interference.
- Do not install the Smarthub II close to heat sources like ovens, radiators or other possible sources of interference e.g audio amplifiers.
- Only connect approved **futurehome** equipment to the Smarthub II.
- The Smarthub II is meant to be used indoor only.
- Caution: Risk of explosion if internal battery is replaced by an incorrect type.
- Properly dispose of this product by following local regulations and guidelines for safe recycling of electronic waste.



Risk of electric shock!

- Changes or modifications to this product may lead to malfunction and must not happen!
- Only use the included power supply!
- The product must not be exposed to dripping or splashing water, or any other liquids.
- Clean with a dry cloth only.
- Service should only be conducted by qualified personnel.

Disconnect the network and power cable if any of the following occurs

- Power cable or adapter is damaged.
- You wish to clean the Smarthub II.
- The Smarthub II is exposed to rain, water or moisture of any kind.



Recycling

This product consists of materials that can be recycled. Please dispose of properly.



Certifications

futurehome Smarthub II CUBE-2V0-EU are in compliance with the following European directives:

- EN 300 328
- EN 301 489-1 V2.1.1-2017
- EN 301 489-17 V3.2.1-2017
- EN 301 489-52 V1.1.0-2016
- EN 62311
- EN 62368-1